

①-A. Yokohama Bay Private Cruise With Geisha Performance Option

Kanagawa/Yokohama



The Experience

Charter a small yacht, relax, and enjoy the scenery of the Port of Yokohama during the evening on into the night. Watch a traditional geisha performance, then talk and play games with the performers after the show.

Sales Points

- Take in unique views of Yokohama Bay.
- Enjoy the quiet atmosphere of a private party.
- Appreciate a geisha performance not far from Tokyo.

Note: Cruises are subject to cancellation due to inclement weather or dangerous water conditions.

General Information

- Contact: Kanagawa DMO
- Business hours: 9:00-17:00
- Website: <https://www.kanagawa-kankou.or.jp/>
- Phone: 045-681-0007
- Email: product@kanagawa-kankou.or.jp

Tour types	Individual・group
Target	Interactive cultural experience
Prices	Please inquire
Includes	Cruise ship charter & geisha fees (3 performers)
Meeting point	<ul style="list-style-type: none"> ▪ Pukari Sanbashi Pier ▪ Red Brick Warehouse Pier ▪ Zou-no-hana Pier ▪ Shinko futo Pier etc
Reservation deadline	At least 2 weeks prior
Reservation period	Year-round
Start time & duration	5 p.m. start (start time flexible), 2-hour cruise
Cruisers	Ciel Bleu (capacity: 48) * Maximum bookable group size: 15 (Group size limited due to performers & other staff also onboard) Ocean Bleu (capacity: 94) MY2 (capacity: 20) * Other cruisers available
Group size	1 person or more (only private bookings)
Private?	Private booking only
Languages	<input type="checkbox"/> EN <input type="checkbox"/> CN <input type="checkbox"/> KR <input type="checkbox"/> Other:
Guide provided?	No

③-A. Kamakura Garden Tour & Lunch With a Local Kamakura Garden Designer Kanagawa/Kamakura



The Experience

Join Ms. Imoto, a garden designer residing in Kamakura, on this tour of carefully selected Japanese gardens. In addition to guiding and showing you the gardens of Kamakura's famous landmarks such as Engakuji Temple and Jochiji Temple, Ms. Imoto will tell you about the areas' historical sites as well. Lunch will be traditional Japanese cuisine consisting of a variety of vegetables, seafood, and rice. This experience offers the opportunity to truly immerse yourself in Kamakura.

** Ms. Imoto offers many options arranging different locations. Please inquire for more details.*

Sales Points

- Enjoy natural scenery from the perspective of a garden designer.
- Explore places in Kamakura that only locals know about and learn about Kamakura's history and lifestyle.
- Discover Japanese nature under Ms. Imoto's guidance.

Note: This tour includes 3 hours of walking over different elevations.

General Information

- Contact: Kanagawa DMO
- Business hours: 9:00-17:00
- Website: <https://www.kanagawa-kankou.or.jp/>
- Phone: 045-681-0007
- Email: product@kanagawa-kankou.or.jp

Tour types

Individual • group

Target

Botany/Japanese local culture enthusiasts

Prices

Please inquire

Includes

Guide fee • temple/garden admission fee • lunch • experience fee (matcha or shakyo sutra writing)

Meeting point

Kita-Kamakura Station
501 Yamanouchi, Kamakura City, Kanagawa Prefecture

Directions

JR Kita-Kamakura Station (Enkakuji Entrance)
Yamanouchi, Kamakura City, Kanagawa Prefecture

Reservation deadline

At least 2 weeks prior

Reservation period

Year-round (except late-July to mid August 2025)

Start time & duration

10 a.m. start, 4-hour experience

Group size

1-10 persons per group (min/max)

Private?

Private booking only

Languages

☒EN ☐CN ☐KR ☐Other:

Guide provided?

Yes (English available)

③-B. Kamakura Garden Tour With a Local Kamakura Garden Designer

Kanagawa／Kamakura



The Experience

Join Ms. Imoto, a garden designer residing in Kamakura, on this tour to carefully selected Japanese gardens. In addition to guiding you through the gardens of Kamakura's famous landmarks such as Engakuji Temple and Jochiji Temple, Ms. Imoto will tell you about the areas' historical sites as well. This experience offers the opportunity to truly immerse yourself in Kamakura.

** Ms. Imoto offers many options arranging different locations. Please inquire for more details.*

Sales Points

- Enjoy natural scenery from the perspective of a garden designer.
- Explore places in Kamakura that only locals know about and learn about Kamakura's history and lifestyle.
- Discover Japanese nature under Ms. Imoto's guidance.

Note: This tour includes 3 hours of walking over different elevations.

General Information

- Contact: Kanagawa DMO
- Business hours: 9:00-17:00
- Website: <https://www.kanagawa-kankou.or.jp/>
- Phone: 045-681-0007
- Email: product@kanagawa-kankou.or.jp

Tour type

Individual

Target

Botany/Japanese local culture enthusiasts

Prices

Please inquire

Includes

Guide fee ▪ temple/garden admission fee ▪ experience fee (matcha or shakyo sutra writing)

Meeting point

Kita-Kamakura Station
501 Yamanouchi, Kamakura City, Kanagawa Prefecture

Directions

JR Kita-Kamakura Station

Reservation deadline

At least 2 weeks prior

Reservation period

Year-round (except late July-mid August 2025)

Start time & duration

10 a.m. start, 4-hour experience

Group size

1-10 persons per group (min/max)

Private?

Private booking only

Languages

☒EN ☐CN ☐KR ☐Other:

Guide provided?

Yes

④ Private Geisha Performance by Hakone Geisha

Kanagawa / All Area



The Experience

Enjoy a private geisha performance, one of the most popular forms of entertainment in Japan. Appreciate not only the songs and dances mastered through diligent training, but also traditional interactive geisha games. With the opportunity to converse with geisha, you will gain intimate knowledge the history of geisha and their training.

Sales Points

- Interact with geisha up close and personal.
- Play traditional geisha games watch them perform.
- The number of geisha and performance times may be adjusted depending on your budget.
- Appreciate these performances in the comfort of your accommodation.

Note: Not all accommodations are able to accommodate geisha performances. Some accommodation may specify performance end times.

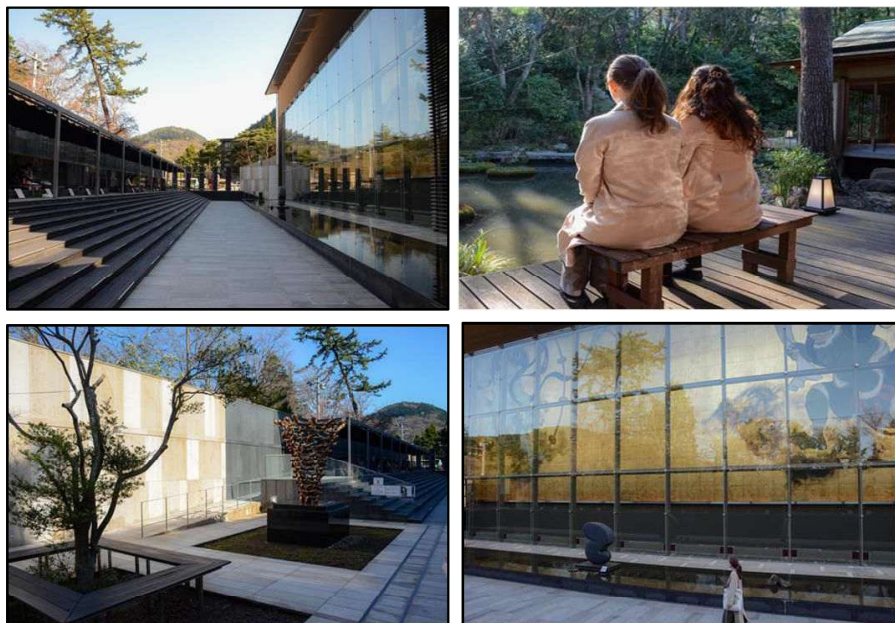
General Information

- Contact: Kanagawa DMO
- Business hours: 9:00-17:00
- Website: <https://www.kanagawa-kankou.or.jp/>
- Phone: 045-681-0007
- Email: product@kanagawa-kankou.or.jp

Tour types	Individual • group
Target	Anyone interested in geisha
Prices	Please inquire
Includes	3 geisha (dancing geisha will have full makeup, wig, and costume)
Meeting point	Geisha are able to perform at meeting/banquet hall in Kanagawa at the accommodation of your choice
Directions	
Reservation deadline	Reservations accepted from 1 year to at least 10 days prior
Reservation period	Year-round
Start time & duration	Preferred start time 6 to 7 p.m., 2-hour performance (30-min extensions available)
Group size	1-15 persons per group (min/max) Please inquire for groups of 16 or more
Private?	Private booking only
Languages	<input checked="" type="checkbox"/> EN <input type="checkbox"/> CN <input type="checkbox"/> KR <input type="checkbox"/> Other:
Guide provided?	No (English-speaking geisha available)

⑥-A. Private After-Hours Guided Tour of the Okada Museum of Art

Kanagawa／Hakone



The Experience

A private guided tour of Okada Museum of Art by a curator, starting with a description of the museum's highlights while relaxing at Kaikaitei, a refined early Showa-era renovated Japanese house.

※Customizable schedule: Enjoy tea at Kaikaitei as a curator explains some of the museum's important works for approx. 60 minutes, then tour the museum to appreciate artwork for another 60 minutes.

An optional car pick-up is available to meet you at Odawara Station or your accommodation in Hakone.

Sales Points

- This experience allows you to leisurely appreciate the museum's artwork while listening to a professional curator describe the pieces after hours when the doors are usually closed to the public.
- The museum has on display about 450 masterpieces of Japanese paintings, ceramics, and Buddhist statues from the 19th century onward; many of which have never been shown anywhere else in Japan.

General Information

- Contact: Kanagawa DMO
- Operating hours: 9:00-17:00
- Website: <https://www.kanagawa-kankou.or.jp/>
- Phone: 045-681-0007
- Email: product@kanagawa-kankou.or.jp

Tour types

Individual • group

Target

Art enthusiasts

Prices

Please inquire

Includes

Admission fee • guide fee

Meeting point

Okada Museum of Art
493-1 Kowakudani, Hakone-machi,
Ashigarashimo-gun, Kanagawa Prefecture 250-0406

Directions

Right next to Owakudani Bus Stop

Reservation deadline

At least 2 weeks prior

Reservation period

Year-round
Closed to visitors on December 31, January 1,
and during exhibition changeover periods.

Start time & duration

4 p.m. start, 2-hour experience

Group size

2-30 persons per group (min/max)
*Contact us for groups of 11 or more

Private?

Private booking only

Languages

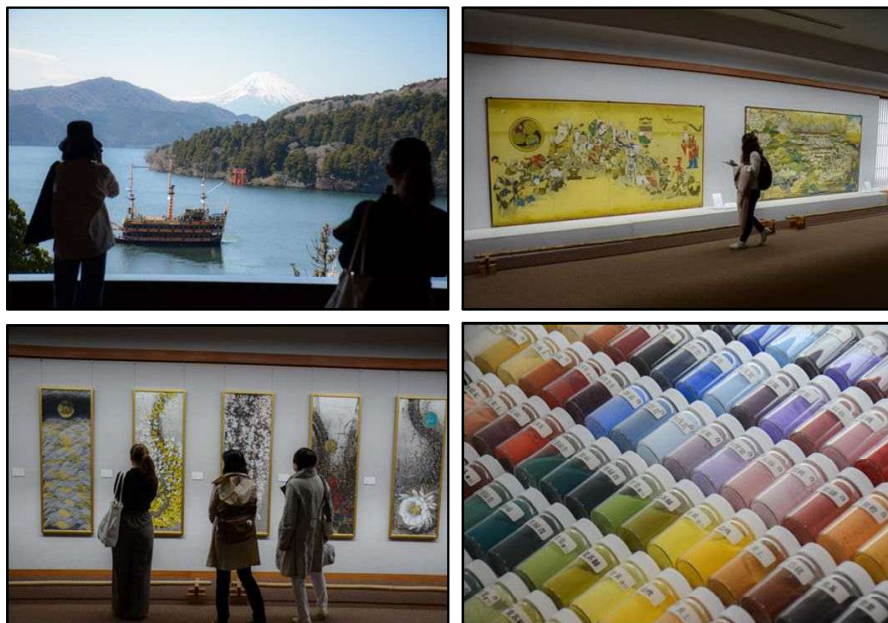
☐EN ☐CN ☐KR ☐Other:

Guide provided?

Yes (Japanese only)

⑦-A. Private Guided Tour of Narukawa Art Museum & Scenic Teatime (Group)

Kanagawa／Hakone



The Experience

Narukawa Art Museum houses over 4,000 *nihonga*-style Japanese artworks created with mineral paints that last for ages. Museum Director Kanagawa will describe some of the major works during this private group tour. Enjoy coffee or matcha and sweets afterwards in the best seats of the cafe as you admire the stunning view of Lake Ashi (and, weather permitting, even Mt. Fuji). You will also receive a souvenir hand-picked by Director Kanagawa. **Early morning private guided tours may also be arranged.**

Sales Points

- Museum Director Kanagawa is also personally acquainted with painters and recounts fascinating anecdotes, making this a truly special experience.
- Museum Director Kanagawa is well-versed in *nihonga*-style art, explaining the distinctive features so even complete beginners may learn about *nihonga*.
- Café offers a picturesque view of Lake Ashi and Mt. Fuji as well when the weather is clear.

General Information

- Contact: Kanagawa DMO
- Operating hours: 9:00-17:00
- Website: <https://www.kanagawa-kankou.or.jp/>
- Phone: 045-681-0007
- Email: product@kanagawa-kankou.or.jp

Tour type	Group
Target	Intellectual/culture oriented
Prices	Please inquire
Includes	Admission fee ▪ guide fee ▪ gift ▪ café beverage
Meeting point	Narukawa Art Museum 570 Moto Hakone, Hakone, Ashigara Shimo, Kanagawa Prefecture 250-0522
Directions	5-minute walk from Moto-Hakone-Ko (bus stop)
Reservation deadline	At least 3 days prior
Reservation period	Year-round
Start time & duration	Start time flexible, 2-hour experience
Group size	8-20 persons per group (min/max)
Private?	Morning only
Languages	<input type="checkbox"/> EN <input type="checkbox"/> CN <input type="checkbox"/> KR <input type="checkbox"/> Other:
Guide provided?	Yes (Japanese-speaking only)

⑧ Odawara Lacquer Workshop Tour

Kanagawa／Odawara



The Experience

Tour includes a visit to the workshop of Mr. Hajime Okawa, one of the few traditional craftsmen carrying on the 500-year-old tradition of Odawara lacquerware. Odawara lacquerware souvenir selected by Mr. Okawa is included.

Note: Sharp objects and stray woodchips are common in the workshop. Please avoid these to prevent injury. This activity is not available for children under 6 years.

Sales Points

- Learn about the history and production process of Odawara lacquerware and observe Mr. Okawa shaving the wooden surfaces in his workshop.
- The souvenir is layered lacquer over a based of sturdy keyaki wood. This is something that will last a lifetime.

General Information

- Contact: Kanagawa DMO
- Business hours: 9:00-17:00
- Website: <https://www.kanagawa-kankou.or.jp/>
- Phone: 045-681-0007
- Email: product@kanagawa-kankou.or.jp

Tour types

Individual ・ group

Target

Anyone interested in traditional arts

Prices

Please inquire

Includes

Tour ・ lacquering fee (1 small piece, such as a small teacup, per person)

Meeting point

2-226-2 Itabashi, Odawara City, Kanagawa Prefecture

Directions

4-minute walk from Hakone-Itabashi Station

Reservation deadline

At least 1 month prior

Reservation period

Year-round

Start time & duration

Start between 9 a.m. and 3 p.m., 1.5-hour experience

Group size

1-4 persons per group (min/max)

Private?

Private booking only

Languages

☐EN ☐CN ☐KR ☐Other:

Guide provided?

No

⑨ Noge Bar Hopping Tour

Kanagawa/Yokohama



The Experience

The Noge Area of Yokohama is home to over 600 bars, izakayas, and eateries that never seem to sleep, no matter what day of the week it is. In this bar hopping tour, your guide will walk you around the district to 3 bars and izakayas. The specific establishments will be selected based on your preferences.

Sales Points

- Your guide is a true local with a thorough knowledge of the area, putting you at ease.
- Establishments and cuisine may be adjusted to meet dietary restrictions and preferences as well as smoking preferences.

General Information

- Contact: Kanagawa DMO
- Business hours: 9:00-17:00
- Website: <https://www.kanagawa-kankou.or.jp/>
- Phone: 045-681-0007
- Email: product@kanagawa-kankou.or.jp

Tour type

Group

Target

Anyone wanting a relaxing out-of-the-ordinary experience or active-interaction with the local scene

Prices

Please inquire

Includes

English guide fee, 1 drink & 1 dish at 3 bars, English menu available

Meeting point

JR Sakuragicho Station or nearby hotel

Directions

(To Noge) 5-minute walk from JR Sakuragicho Station

Reservation deadline

At least 2 weeks prior

Reservation period

Year-round

Start time & duration

Around 3 hrs.

Group size

10 persons per group/ 1-4 groups (min/max)

Private?

Tour is private; bars are open to the public

Languages

☒EN ☐CN ☐KR ☐Other:

Guide provided?

Yes (English)

⑩ Yokohama Beer Bike Local Guided Tour in Yokohama

Kanagawa/Yokohama



The Experience

Explore Minato Mirai, a popular area of Yokohama, with a local guide. After the tour, experience night life in a unique way – riding along on a beer bike!

Your tour will start with a local craft beer tasting and guided tour of a microbrewery. Then, you'll hop on your beer bike and pedal the night away while enjoying local Yokohama beer. After savoring the birthplace of Japanese beer, receive a local souvenir before parting with your guide.

Sales Points

- Local guide will show you around Minato Mirai.
- Only place to experience this kind of tour in Japan.
- Take in Minato Mirai's beautiful nightscape.
- Enjoy live music during the beer bike ride

Note: Tour may be canceled in the event of inclement weather. Final decision will be made by 9 p.m. the night before. Please note that the legal drinking age in Japan is 20 years old.

General Information

- Contact: Kanagawa DMO
- Business hours: 9:00-17:00
- Website: <https://www.kanagawa-kankou.or.jp/>
- Phone: 045-681-0007
- Email: product@kanagawa-kankou.or.jp

Tour types

Individual • group

Target

Anyone interested in Japanese craft beer

Prices

Please inquire

Includes

Brewery tour • beer • beer bike rental • souvenir • snack set • guide fee

Meeting point

QUAYS pacific grill
Yokohama Hammerhead 1F/2F, 2-14-1 Shinko,
Naka-ku, Yokohama City, Kanagawa
Prefecture

Directions

14-minute walk from Minato Mirai Station

Reservation deadline

At least 4 weeks prior

Reservation period

Year-round

Start time & duration

4 p.m. start (inquire about different start times),
3-hour experience (approx.)
*Beer bike ride is 1.5 hrs.

Group size

4-6 persons per group (min/max)

Private?

Private booking only

Languages

☒EN ☐CN ☐KR ☐Other:

Guide provided?

Yes (English)

12-A. Yakatabune Private Boat (Japan Summer Festival Theme)

Kanagawa/Yokohama



The Experience

This boat tour takes you from Sakuragicho Sanbashi Pier to photogenic spots around Yokohama's Minato Mirai, Red Brick Warehouse, Yamashita Park, and Bay Bridge areas. At the end, enjoy a Japan summer festival-themed party.

No matter what season, you will be able to peruse summer festival displays and *yatai* food stall fare. Simple yukata are available for sale upon request. ※Yatai stall fare includes takoyaki, yakisoba, oden, nagashi somen noodles, etc. with other dishes that may be arranged upon request (prices vary).

Note: Boat motion may be considerable depending on weather conditions but will not affect the safety of the ride. Please bring anti-nausea medicine if necessary.

Sales Points

- Enjoy a Japanese summer festival at any time of the year.
- Noon and evening time slots are available to fit your itinerary.
- If inclement weather cancels the cruise, you may still enjoy the summer festival.
- Able to accommodate groups up to 50 people.
- All-inclusive package with the boat, food, and festival.

General Information

- Contact: Kanagawa DMO
- Business hours: 9:00-17:00
- Website: <https://www.kanagawa-kankou.or.jp/>
- Phone: 045-681-0007
- Email: product@kanagawa-kankou.or.jp

Tour type

Group

Target

Interactive cultural experience

Prices

Please inquire

Includes

Separate charge for drinks

Meeting point

Sakuragicho Sanbashi Pier
1-101-1 Sakuragicho, Naka-ku, Yokohama City,
Kanagawa Prefecture

Directions

3-minute walk from JR Sakuragicho Station

Reservation deadline

At least 2 weeks prior (reservations accepted up to 6 months in advance)

Reservation period

Monday to Thursday during June, September, October, November 2025, and January, February 2026

Start time & duration

Start at 12 p.m. or 6 p.m., 2-hour boat tour

Group size

20-50 persons per group

Private?

Private booking only

Languages

☐EN ☐CN ☐KR ☐Other:

Guide provided?

No

⑭ Samurai Artist KAMUI Private Sword Performance

Kanagawa / All Area



写真は全てイメージです

The Experience

Enjoy a private sword technique performance (at an approved venue) by the samurai group, Samurai Artist KAMUI. After the performance, Samurai Artist KAMUI will instruct the group in samurai techniques.

Samurai Artist KAMUI was formed by Tetsuro Shiguchi, choreographer for fight scenes in *Kill Bill Vol. 1* written and directed by Quentin Tarantino. To this day, Samurai Artist KAMUI continue to spread the culture and art of Japanese samurai.

Sales Points

- Enjoy a totally private performance by Samurai Artist KAMUI.
- Feel like the main character in a samurai movie.
- Kanagawa DMO is also able to book the venue for you (extra cost).

Note: Please obtain permission from the venue for a sword performance.

***Kanagawa DMO is also able to make arrangements for you (extra cost).**

General Information

- Contact: Kanagawa DMO
- Business hours: 9:00-17:00
- Website: <https://www.kanagawa-kankou.or.jp/>
- Phone: 045-681-0007
- Email: product@kanagawa-kankou.or.jp

Tour type

Group

Target

Anyone wanting a relaxing out-of-the-ordinary experience or active-interaction with the local scene

Prices

Please inquire

Includes

Samurai Artist KAMUI group private show (4 members)

Meeting point

Locations may be arranged within Kanagawa Prefecture

Directions

Reservation deadline

At least 1 month in advance

Reservation period

Year-round

Start time & duration

60-minute performance
(Please inquire about start times)

Group size

1-30 persons per group
(Please inquire for groups over 30 persons)

Private?

Private performances only

Languages

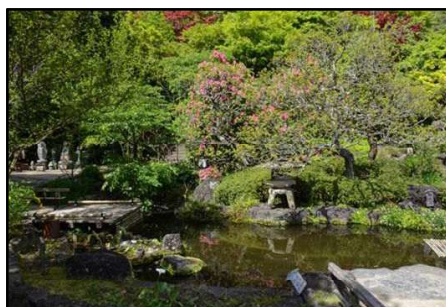
☐EN ☐CN ☐KR ☐Other:

Guide provided?

No

15 Kamakura Hasedera Temple Private Guided Tour

Kanagawa／Kamakura



The Experience

In this tour, a monk will give you a private guided tour of Hasedera Temple, one of the most famous ancient temples in Kamakura. See the main sights of the temple, pray for good luck and good fortune in the main hall, and tour the temple's museum. Enjoy a drink and traditional Japanese dango dumplings at Kaikoan Restaurant on the temple grounds.

Vegan and vegetarian options are also available.

**Optional sutra copying experience is also available (extra charge).*

Sales Points

- An temple monk will explain the temple's areas in detail.
- Approach and pray to the main Kannon Bodhisattva statue up close, a rare opportunity.

General Information

- Contact: Kanagawa DMO
- Business hours: 9:00-17:00
- Website: <https://www.kanagawa-kankou.or.jp/>
- Phone: 045-681-0007
- Email: product@kanagawa-kankou.or.jp

Tour types

Individual・group

Target

Anyone interested in Buddhist temples

Prices

Please inquire

Includes

Tea room fee (beverage & dango dumpling)
Sutra reading & prayer fee

Meeting point

Kamakura Hasedera Temple
3-11-2 Hase, Kamakura City, Kanagawa
Prefecture 248-0016

Directions

5-minute walk from Enoshima Dentetsu Hase Station

Reservation deadline

Reservations accepted 3 months to 2 weeks prior to event date

Reservation period

Year-round except for busy periods (January, April, May, June)

Start time & duration

2 hours

Group size

1-6 persons per group (min/max)
*Please inquire for groups of 7 or more

Private?

Private bookings only

Languages

☐EN ☐CN ☐KR ☐Other:

Guide provided?

Yes (Japanese only)

⑩-A. Japanese Cultural Experience at Enoshima Shrine (Tea Ceremony, Flower Arrangement, and Prayer Ritual)

Kanagawa／Fujisawa



The Experience

Immerse yourself in Japanese culture at Enoshima Shrine, revered for over 800 years as a deity of the arts. This program offers authentic experiences in flower arrangement and tea ceremony.

In the flower arrangement session, Learn the spirit and techniques of this traditional art, create your own unique floral arrangement, and dedicate it to the shrine deity during a prayer ritual. The session is led by Mr. Kaho Osada, headmaster of Ikenobo Hoshuryu. During the tea ceremony session, learn the philosophy and proper etiquette of tea, gaining a deeper understanding of Japanese traditions.

Sales Points

- Explore areas of the shrine usually closed to the general public.
- Enjoy friendly instruction from a renowned Ikebana headmaster.
- Receive guidance tailored to all skill levels from beginner to advanced.
- Appreciate the headmaster's stunning Ikebana performance up close.
- Participate in unique experiences, such as joining a prayer ritual usually closed to the public.

General Information

- Contact: Kanagawa DMO
- Business hours: 9:00-17:00
- Website: <https://www.kanagawa-kankou.or.jp/>
- Phone: 045-681-0007
- Email: product@kanagawa-kankou.or.jp

Tour types	Individual ・ group
Target	Intellectual pursuit oriented
Prices	Please inquire
Includes	Material fee, instruction fee, shrine ceremony fee
Meeting point	2-3-8 Enoshima, Fujisawa City, Kanagawa Prefecture 251-0036 (Hetsumiya Shrine Office)
Directions	18-minute walk from Katase-Enoshima Station
Reservation deadline	At least 2 weeks prior
Reservation period	Unavailable on the following dates: (1/1-2/3, 3/16, Golden Week, 6/30, 7/1, 2nd Sat and 3rd Mon of July, 9/7-9/9, 11/23, 12/15-12/31). All dates in April, and early October for the autumn festival are also unavailable. Every Tue, Wed, and Thu (available upon request).
Start time & duration	10 a.m. or 1 p.m. start, approx. 3-hour experience
Group size	2-20 persons per group (min/max) <i>*Please inquire for groups larger than 20.</i>
Private?	Private booking only
Languages	<input type="checkbox"/> EN <input type="checkbox"/> CN <input type="checkbox"/> KR <input type="checkbox"/> Other:
Guide provided?	Yes (Japanese only)

⑯-B. Japanese Cultural Experience at Enoshima Shrine (Flower Arrangement and Prayer Ritual)

Kanagawa／Fujisawa



The Experience

Immerse yourself in Japanese culture at Enoshima Shrine, revered for over 800 years as a deity of the arts. This program offers authentic experiences in flower arrangement.

Learn the spirit and techniques of this traditional art, create your own unique floral arrangement, and dedicate it to the shrine deity during a prayer ritual. The session is led by Mr. Kaho Osada, headmaster of Ikenobo Hoshuryu.

Sales Points

- Explore areas of the shrine usually closed to the general public.
- Enjoy friendly instruction from a renowned Ikebana headmaster.
- Receive guidance tailored to all skill levels from beginner to advanced.
- Appreciate the headmaster's stunning Ikebana performance up close.
- Participate in unique experiences, such as joining a prayer ritual usually closed to the public.

General Information

- Contact: Kanagawa DMO
- Business hours: 9:00-17:00
- Website: <https://www.kanagawa-kankou.or.jp/>
- Phone: 045-681-0007
- Email: product@kanagawa-kankou.or.jp

Tour types	Individual ・ group
Target	Intellectual pursuit oriented
Prices	Please inquire
Includes	Material fee, instruction fee, shrine ceremony fee
Meeting point	2-3-8 Enoshima, Fujisawa City, Kanagawa Prefecture 251-0036 (Hetsumiya Shrine Office)
Directions	18-minute walk from Katase-Enoshima Station
Reservation deadline	At least 2 weeks prior
Reservation period	Unavailable on the following dates: (1/1-2/3, 3/16, Golden Week, 6/30, 7/1, 2nd Sat and 3rd Mon of July, 9/7-9/9, 11/23, 12/15-12/31). All dates in April, and early October for the autumn festival are also unavailable. Every Tue, Wed, and Thu (available upon request).
Start time & duration	10 a.m. or 1 p.m. start, approx. 2.5-hour experience
Group size	2-20 persons per group (min/max); group size may be adjusted upon request
Private?	Private booking only
Languages	<input type="checkbox"/> EN <input type="checkbox"/> CN <input type="checkbox"/> KR <input type="checkbox"/> Other:
Guide provided?	Yes (Japanese only)

⑪ Kaiseki Cuisine and Tea Pairing at Jyukouan

Kanagawa / Sagamihara



The Experience

Jyukouan, a restaurant housed in a restored 250-year-old thatched-roof residence constructed during the Edo period, offers a unique Kaiseki dining experience paired with teas crafted by the proprietress, who possesses a profound and refined understanding of tea.

Immerse yourself in the art of tea preparation, enhanced by detailed explanations and warm hospitality.

The second-floor attic showcases the traditional craftsmanship of the thatched roof and provides an optional tea ceremony experience.

Sales Points

- The proprietress, a former director at a major Japanese television network, is known for her refined communication skills and extensive knowledge of Japanese tea culture.
- Receive a special souvenir set of tea, harvested exclusively from this region.
- The optional tea ceremony offers an authentic experience embracing Japan's traditional culture.
- **Vegetarian options are also available.**

General Information

- Contact: Kanagawa DMO
- Business hours: 9:00-17:00
- Website: <https://www.kanagawa-kankou.or.jp/>
- Phone: 045-681-0007
- Email: product@kanagawa-kankou.or.jp

Tour types

Individual • group

Target

Active/local interaction oriented
Intellectual pursuit oriented

Prices

Please inquire

Includes

Tea-pairing, Kaiseki cuisine, tea souvenir

Meeting point

533 Chigira, Midori-ku, Sagamihara City, Kanagawa Prefecture

Directions

3.1 km from JR Chuo Line Sagamiko Station

Reservation deadline

Reservations accepted from 6 months to 1 month prior to the event date

Reservation period

Reservations accepted every day except Tuesday

Start time & duration

Starts at 12:00 p.m. (flexible start time available upon request), 2-hour duration

Group size

4-10 persons per group (contact us for groups larger than 10)

Private?

Private room available

Languages

☐EN ☐CN ☐KR ☐Other:

Guide provided?

No

18 Oyama Afuri Shrine Tour & Osamedachi Wooden Sword Offering Experience

Kanagawa/Isehara



The Experience

Climb Mount Oyama, a sacred site with a rich and storied history. Follow a practice popular among pilgrims during the 17th century as you experience the tradition of carrying a wooden sword, called a *tachi*, along the sacred path and then present it as an offering at Oyama Afuri Shrine.

Along the way, local craftsmen will show you how to play spinning Koma tops, and you will enjoy a delicious lunch of tofu dishes, a specialty of Oyama.

After offering the sword, enjoy dessert at Sekison café with its breathtaking views. A priest from Oyama Afuri Shrine will guide you through the experience with an exclusive tour of the shrine grounds, sharing with you stories about the rich history of the mountain.

Sales Points

- Experience a 17th-century tradition popular among pilgrims.
- Visit a power spot sacred since the Jomon period.
- Interact with locals along the Koma Sando path.
- At Afuri Shrine and Sekison café, enjoy spectacular views of Sagami Bay, given a two-star rating in Michelin Green Guide Japan.

General Information

- Contact: Kanagawa DMO
- Business hours: 9:00-17:00
- Website: <https://www.kanagawa-kankou.or.jp/>
- Phone: 045-681-0007
- Email: product@kanagawa-kankou.or.jp

Tour types	Individual & small group
Target	Relaxation & intellectual pursuit
Prices	Please inquire
Includes	Guide fee, spinning top & sword offering experience fee, cable car ticket, lunch, drink and sweets at Sekison café
Meeting point	Oyama Cable Bus Stop Oyama, Isehara-shi, Kanagawa 259-1107
Directions	25 min. by bus from Isehara Station
Reservation deadline	Please make your reservation at least 10 days prior
Reservation accepted	Every day except the 1st of the month
Start time & duration	11 a.m. start, tour takes 4.5 hrs.
Tour size	Minimum of 5 up to a maximum of 10 <i>*Please inquire about groups larger than 10</i>
Private?	Private guided tour (however, tour venues are not exclusive)
Languages	<input checked="" type="checkbox"/> EN <input type="checkbox"/> CN <input type="checkbox"/> KR <input type="checkbox"/> Other:
Guide provided?	Yes (Both Japanese & English are available)

①9 Izakaya Mecca Noge—Noge Dreamland Yokocho Festival Program—

Kanagawa/Yokohama



The Experience

Take part in this special experience in Noge, one of Japan's most renowned izakaya districts, with a special private event at Noge Dreamland Yokocho comprising seven unique izakayas drawn from among the area's over 600 local establishments. Decorated with colorful traditional lanterns, Noge Dreamland Yokocho offers a steady stream of Japanese cultural performances including live shows by geisha and chindonya street entertainers as well as a spectacular maguro cutting demonstration! Be sure to also enjoy the innovative Japanese sake cocktails infused with traditional Japanese tea at the beverage bar. A premium rickshaw welcome service available for VIP guests and top performers! This experience will create unforgettable memories as you experience Japanese izakaya culture on a journey taking you into the bustling festival atmosphere. How about signing up for this inviting plan for a truly special evening that will be etched in your heart forever?

Sales Points

English menus are available with cuisine also for vegetarian and other special dietary requirements.

Website:

https://yokohamadmc.com/noge_dreamland/index.html

Options available at additional charge.

General Information

- Contact: Kanagawa DMO
- Business hours: 9:00-17:00
- Website: <https://www.kanagawa-kankou.or.jp/>
- Phone: 045-681-0007
- Email: product@kanagawa-kankou.or.jp
- Tour/event management: Yokohama DMC (YDMS Co. Ltd.)

Tour type

Group

Target

MICE and other post-event programs

Prices

Please inquire

Includes

Venue, food & drink charges
 【Extra charge】 Geisha, maguro cutting show, Chindonya street entertainers, English-speaking staff, MC, and rickshaw

Meeting point

1-39-7 Hanasaki-cho, Naka-ku, Yokohama

Directions

5-minute walk from JR Sakuragicho Station

Reservation deadline

2 weeks prior to scheduled date

Reservation accepted

Year-round

Start time & duration

Basic plan: 2 hours
 (Additional charge for time extension)

Tour size

Guaranteed capacity for 100

Private?

Private booking (100~150 persons)

Languages

☒ EN ☐ CN ☐ KR ☐ Other:

Guide provided?

Yes (English-speaking staff available)

Note: Deposit (min. 30%) required at time of reservation.

20 Preparing Japanese Confectioneries with Professional Artisan

Kanagawa / All Areas



The Experience

Make wagashi (Japanese confectioneries) under the instruction of a wagashi artisan with many years of experience at a long-established traditional confectionery shop. The artisan will help you expand your knowledge of wagashi, after which you will create four types of confections yourself. Once you hear more about wagashi and understand this traditional Japanese confectionery, the artisan will demonstrate techniques for you so that you will also be able to create your own wagashi. Your artisan will show you how seasonal wagashi are created to help you experience each of Japan's four seasons.

Sales Points

- Receive instruction directly from a wagashi artisan and learn actual techniques professionals employ.
- While not simple to make, experience a special satisfaction when distinctive colors and patterns appear.
- Enjoy talking and interacting with the artisan as you savor the delicacies that you've prepared yourself.
- Gain a greater awareness of Japanese culture and the four seasons through wagashi.
- While prices vary, you may prepare a fruit daifuku (confection filled with fruit) using local specialties from Kanagawa Prefecture.

Please note that azuki beans, red beans, sugar, shiratama (glutinous rice) flour, and food coloring will be used, so anyone with allergies should refrain from participating.

General Information

- Contact: Kanagawa DMO
- Business hours: 9:00-17:00
- Website: <https://www.kanagawa-kankou.or.jp/>
- Phone: 045-681-0007
- Email: product@kanagawa-kankou.or.jp

Tour type	Individual・group
Target	Enriching experience both intellectually & culturally
Prices	Please inquire.
Includes	Materials & instruction fees
Meeting point (Address)	Varies depending on venue (arranged for each group) ※Locations may be used as the venue if handwashing facility available
Directions	
Reservation deadline	From 6 months to 1 week prior
Reservation accepted	Year-round Except: August 1~10 and December 25~January 15
Start time & duration	10:30 or 13:30, 2-hour experience
Tour size	Groups of 1 to 10 persons (Contact us for larger groups)
Private	Private bookings only
Languages	<input type="checkbox"/> EN <input type="checkbox"/> CN <input type="checkbox"/> KR <input type="checkbox"/> Other:
Guide provided?	No

②① Enoshima Aquarium & Behind-the-Scenes Tour

Kanagawa/Fujisawa



The Experience

Enoshima Aquarium offers an outstanding panorama of Sagami Bay. Turn to the right to see Japan's most famous mountain, Mount Fuji, and to the left there is scenic Enoshima Island. The themes of "Sagami Bay and the Pacific Ocean" together with "Marine Life" inhabiting these bodies of water are woven together throughout this edutainment-style aquarium. Have fun as you learn about the sea and surrounding environment. This experience provides you the opportunity not only to enjoy magnificent scenery and unique exhibits, but also the chance to take a guided behind-the-scenes tour of the aquarium. This is a delightful adventure worth experiencing.

Sales Points

- Convenient location near Enoshima and Kamakura makes it easy to include in sightseeing routes.
 - Sagami Bay Zone, Jellyfish Fantasy Hall, and other exhibits are sought-after favorites. The jellyfish display is truly eye-catching and a great spot for a souvenir snapshot.
- ※Please note that no photos are allowed during the behind-the-scenes tour.

General Information

- Contact: Kanagawa DMO
- Business hours: 9:00-17:00
- Website: <https://www.kanagawa-kankou.or.jp/>
- Phone: 045-681-0007
- Email: product@kanagawa-kankou.or.jp

Tour types

Individual・group

Target

Anyone wanting a relaxing out-of-the-ordinary experience or active-interaction with the local community

Prices (tax incl.) * DMO wholesale

Please inquire.

Includes

Aquarium tour, guided behind-the-scenes tour, and original VIP Tour Participation Certificate

Meeting point

Enoshima Aquarium
2-19-1 Katase Kaigan, Fujisawa City, Kanagawa Prefecture, 251-0035

Reservation deadline

Reservations accepted based on availability

Reservations accepted

Year-round ※Except when the facility is closed for maintenance

Start time & duration

9:30 or 13:00, 2-hour experience

Tour size

15~40 persons per group (min/max)
※Please inquire for groups of less than 15

Languages

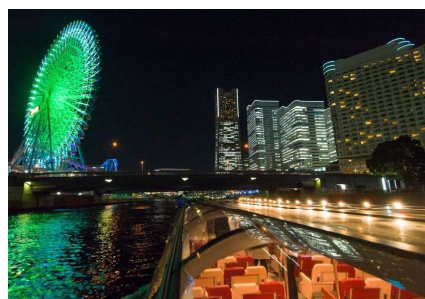
☐ EN ☐ CN ☐ KR ☐ Other:

Guide provided?

Yes (only Japanese-speaking)

②② Yokohama Port Town: Mini-Cruise & Local Gourmet Evening (Dinner or Lunch)

Kanagawa/Yokohama



The Experience

This package experience combines a mini-cruise on the Sea Bass water bus, a popular way for nearly 40 years to get around and enjoy the sights of the legendary port town of Yokohama, and either lunch or dinner where you'll enjoy some of Yokohama's delicious local cuisine.

Sales Points

- Cruise aboard the Sea Bass from Yokohama Station East Exit to Yamashita Park and enjoy Minatomirai, Marine Tower, and other iconic views of Yokohama. (You may disembark along the way.)
- Once ashore, enjoy to your heart's content a local gourmet option such as authentic Chinese cuisine in Yokohama Chinatown which is one of the three largest and most famous Chinatowns in Japan, a meal at a long-standing Yokohama restaurant serving traditional cuisine, or a craft beer hall that is the pride of Yokohama—the birthplace of Japan's beer industry and home to many renowned craft breweries.

【Sea Bass Cruise】 Inclement weather may cancel the cruise portion.

【Dining】 Please contact us to coordinate your preferences, budget, and other wishes.

General Information

- Contact: Kanagawa DMO
- Business hours: 9:00-17:00
- Website: <https://www.kanagawa-kankou.or.jp/>
- Phone: 045-681-0007
- Email: product@kanagawa-kankou.or.jp

Tour types

Individual・group

Target

Anyone wanting a relaxing out-of-the-ordinary experience or active-interaction with the local community

Prices

Since it varies by restaurant, please contact us for details.
(Lunch plans start from around ¥5,000 per person, and dinner plans from around ¥8,000 per person.)
Yokohama Gourmet Option Candidates
①ARAIYA (Beef hotpot)
②Chinatown "HUTAIRO" ((Chinese food),
③Hotel New Grand(Italian cuisine)
④Craft Beer Restaurant "UMAYA"
⑤THE WHARF HOUSE (Yamashita Park)
⑥Hard Rock Cafe Yokohama

Includes

Sea Bass fare and lunch/dinner
※Beverages may not be included in meal price at some restaurants.

Meeting point

Sea Bass Boarding Platforms:
Yokohama Station East Exit (Bay Quarter Pier), Red Brick Pier, Yamashita Park Pier, etc.

Reservation deadline

Reservations accepted depending on availability

Reservation accepted

Year-round

Start time & duration

1.5 ~ 2 hours ※Start time negotiable

Tour size

2 or more

Languages

☐ EN ☐ CN ☐ KR ☐ Other:

Guide provided?

No

②③ Tour of Yokohama City Central Wholesale Market

Kanagawa/Yokohama



The Experience

Yokohama City Central Wholesale Market is the hub maintaining Japan's seafood culture. Established in 1931, it is the third-oldest market in Japan. Today, it primarily functions as a wholesale distribution point for restaurants, fish shops, and other establishments. This guided tour offers you the rare opportunity to see and learn more about restricted areas of this unique market, such as a minus 40-degree-Celsius tuna freezer and live fish tanks for storing fish at peak freshness.

Sales Points

This special experience gives you exclusive access to see the auction process up close as sellers and buyers compete for choice tuna and other seafood, as well as the inside of an ultra-low temperature refrigeration facility. You will also have the opportunity to purchase produce from wholesalers off-limits to the general public. Professionals will show you how to select the best seasonal fish and enjoy them!

General Information

- Contact: Kanagawa DMO
- Business hours: 9:00-17:00
- Website: <https://www.kanagawa-kankou.or.jp/>
- Phone: 045-681-0007
- Email: product@kanagawa-kankou.or.jp

Tour types

Individual ・ group

Target

Anyone wanting a relaxing out-of-the-ordinary experience or active-interaction with the local community

Prices (tax incl.)

Please inquire

Includes

Market experience fee (tour & guide), breakfast, and boot & hat rental charge

Meeting point

1-1 Yamauchi-cho, Kanagawa Ward, Yokohama City
Meet in front of the security office in the Seafood Section of the Yokohama City Central Wholesale Market (red-roofed building)
※20-minute walk from JR Yokohama Station

Reservation deadline

2 weeks in advance

Reservations accepted

Tours on all days except when market closed
Unavailable on: Wednesdays, Sundays, first and third Saturdays, and other holidays (including weekly scheduled closures & other closings)

Start time & duration

5:00AM, 2-hour experience

Tour size

2 ~ 10 per group

Languages

☐ EN ☐ CN ☐ KR ☐ Other:

Guide provided?

Yes (English available)

④ Authentic Chinatown Cuisine (Lunch/Dinner) & Magical Secret Bian Lian Show Kanagawa/Yokohama



The Experience

- Enjoy authentic Chinese cuisine at Futairo as you take in a traditional Bian Lian performance.
- Savor handmade dim sum and other delectable dishes crafted with the finest ingredients during a delightful lunch or dinner of authentic Chinese cuisine.
- Select your preference of seating option, accommodating small groups up to large banquets arranged in a table setting, private room, or even a spacious hall.

Sales Points

- Bian Lian, the Magical Art of Chinese “Face Changing,” is a traditional performing art that originated in Sichuan Province over 300 years ago. Originally a production technique developed locally in Sichuan theaters, Bian Lian portrays a range of character and emotional transitions. The art form of instantaneously changing masks is truly split-second and the technique has always been a closely guarded secret.
- This singularly-unique Yokohama program is an opportunity to enjoy a rare live performance of Bian Lian and a delicious dining experience in Yokohama's Chinatown, one of Japan's three largest Chinese districts.

General Information

- Contact: Kanagawa DMO
- Business hours: 9:00-17:00
- Website: <https://www.kanagawa-kankou.or.jp/>
- Phone: 045-681-0007
- Email: product@kanagawa-kankou.or.jp

Tour types

Individual ・ group

Target

Anyone wanting a relaxing out-of-the-ordinary experience or active-interaction with the local community

Prices (tax incl.) * DMO wholesale

Please inquire.

Includes

Bian Lian show, lunch/dinner, and beverages
* Any additional food or beverage orders may be settled at the venue.

Meeting point

In front of Futairo at 164 Yamashita-cho, Naka Ward, Yokohama City

Reservation deadline

Reservations accepted depending on availability

Reservations accepted

Year-round

Start time & duration

Lunch: 11:30 am - 4:30 pm (approx. 1 to 1.5 hours)
Dinner: 5:00 pm - 9:30 pm (approx. 1.5 hours)
※Lunch available from 11:00 am on Saturdays, Sundays, and holidays
※Bian Lian show: approx. 10 to 15 min.

Tour size

5 ~ 80 people

Languages

☐ EN ☒ CN ☐ KR ☐ Other:

Guide provided?

No

25 Yokohama geisha experience!



Content Overview

Yokohama geisha are inheritors of the traditions of the entertainment world, Karyukai, that developed with the opening of the port of Yokohama, and they are the modern-day representatives of hospitality, including shamisen, dance, and ozashiki (Japanese banquet room) games.

It is active in diverse settings such as international conferences, cruise welcomes, and sightseeing experiences. As a "living cultural asset" that combines tradition and sophistication, it offers special moments for guests from Japan and abroad.

We will propose performance and experience programs tailored to your requests.

Selling points for foreign visitors to Japan

In addition to traditional performing arts such as shamisen and dance, Yokohama Geisha is flexible enough to accommodate Western music performances and international productions. With the unique history of the port town as a backdrop, a variety of hospitality services for foreign visitors to Japan are available. English language support is available, making it ideal for VIP hospitality and cultural experiences for cruise passengers and international conferences.

Kanagawa / All areas

Basic Information

Contact: Kanagawa DMO

Business hours: 9:00-17:00

■ Home Page: <https://www.kanagawa-kankou.or.jp/>

■ Phone number: 045-681-0007

■ Email address: product@kanagawa-kankou.or.jp

Possible forms of travel

Group/Individual

Target Clientele

Active-oriented (with emphasis on local exchange)
Relaxation-oriented

Selling price

Please contact the Kanagawa DMO

Price includes

Geisha dispatch fee
Please place orders for a minimum of 5 geisha.

Meeting place (representative address)

Customer-designated venue

Access

Not applicable. (Designated venue)

Reservation Period

Year round

Period and frequency of implementation

Year round

Time required/Start time

2 hours (extension can be made in 30-minute increments)

Number of participants required for implementation

Not applicable.

Charter service availability

This content is for chartered use only.

Language support

☐ English ☐ Chinese ☐ Korean ☐ Other:

Arranging a guide

Arrangements for English-speaking guides and English-speaking MCs are recommended.

②⑥ Odawara Castle Ninja Experience
(Ninja Experience with English Guide at Odawara Castle Park)

Kanagawa／Odawara



The Experience

This special program immerses you in the world of the legendary “FUMA NINJA,” said to have made a name for themselves during the Sengoku period, set against the backdrop of Odawara Castle. The program consists of two parts. First, join an English-guided walking tour around Odawara Castle Park. While viewing the castle tower and stone walls, you will encounter the stories of the Samurai and Ninjas who once fought here. Along the way, at the SAMURAI Museum, you can view authentic armor and Japanese swords, explore the background of Japanese Bushido and Ninja culture. After that, it's finally time for the Ninja experience at the Castle Park. Under the careful guidance of a ninja master, you will experience techniques such as shuriken, blowguns, and swordsmanship once used by real Ninjas.

Sales Points

- In the “Ninja Experience,” participants dress in Ninja costumes and take on activities incorporating team-building elements using Swords, Blowguns, and Shuriken.
- This unique content deepens participants' understanding of Japanese history and culture, combining learning with hands-on experience to create a memorable experience.

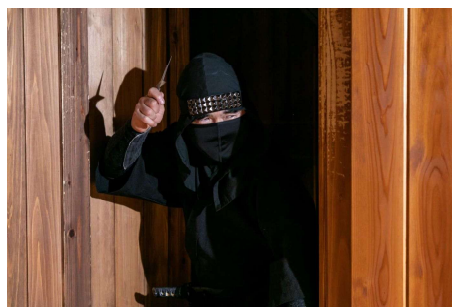
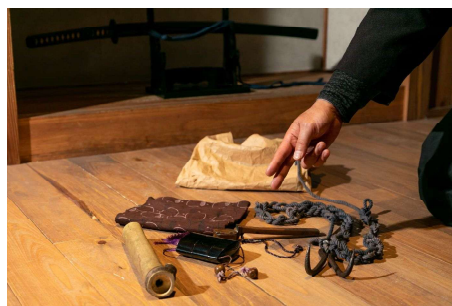
General Information

- Contact: Kanagawa DMO
- Business hours: 9:00-17:00
- Website: <https://www.kanagawa-kankou.or.jp/>
- Phone: 045-681-0007
- Email: product@kanagawa-kankou.or.jp

Tour type	Group
Target	Active-oriented / Relaxation-oriented
Prices	Please inquire
Includes	English Guide (1 person), Ninja Experience (Shuriken, Blowgun, Katana), Ninja Costume Rental, Admission fee (Tokiwagi-mon SAMURAI museum), Parking fee for Fujidana temporary tourist bus
Meeting point	For bus arrivals: Fujidana Temporary Tourist Bus Parking Lot (3 Jonai, Odawara City, Kanagawa Prefecture 250-0014)
Reservation Period	Reservations accepted from 12 months prior to 30 days before.
Period and frequency of implementation	<ul style="list-style-type: none"> ▪ Closed days of facilities in Odawara Castle Park https://odawaracastle.com/info/ ▪ Excluding peak seasons at Odawara Castle (spring and autumn tourist seasons, GW, summer vacation, New Year holidays) and event days
Time required/Start time	2-hour experience (approx.) ※ between 10:00 AM and 6:00 PM
Group size	20-30 persons per group
Languages	<input checked="" type="checkbox"/> EN <input type="checkbox"/> CN <input type="checkbox"/> KR <input type="checkbox"/> Other:
Guide provided?	Yes (English Available)

②⑦ Off-site Ninja Experience (Ninja Experience with English Guide)

Kanagawa / All Areas



The Experience

This is a special off-site program where you can experience the world of the legendary “FUMA NINJA”, who were based in Odawara. Corporate training, MICE events, educational tours, and inbound events can be held at your preferred venue. Participants challenge themselves with activities such as Katana, Blowguns, and Shuriken. Under the careful guidance of a Ninja master, you can experience Japanese history and culture firsthand through hands-on activities. The program also includes team-building elements, allowing participants to enjoy an immersive experience while fostering a sense of unity among the group.

Sales Points

- In the “Ninja Experience,” participants dress in Ninja costumes and take on activities incorporating team-building elements using Katana swords, Blowguns, and Shuriken.
- This unique content deepens participants' understanding of Japanese history and culture, combining learning with hands-on experience to create a memorable experience.

General Information

- Contact: Kanagawa DMO
- Business hours: 9:00-17:00
- Website: <https://www.kanagawa-kankou.or.jp/>
- Phone: 045-681-0007
- Email: product@kanagawa-kankou.or.jp

Tour type	Group
Target	Relaxation-oriented / Active-oriented
Prices	Please inquire
Includes	English Guide (1 person), Ninja Experience (Shuriken, Blowgun, Katana), Ninja Costume Rental
Meeting point	Off-site Venues ※Arrangements and coordination for off-site venues (including obtaining venue usage permits) are not included.
Reservation Period	Reservations accepted from 12 months prior to 30 days before.
Period and frequency of implementation	Year-round (Negotiable depending on location and schedule)
Time required/Start time	2-hour experience (approx.) ※ between 10:00 AM and 6:00 PM
Group size	20-30 persons per group
Languages	<input checked="" type="checkbox"/> EN <input type="checkbox"/> CN <input type="checkbox"/> KR <input type="checkbox"/> Other:
Guide provided?	Yes (English Available)

28 Experience Local Gourmet Delights in Minato Mirai
[Hard Rock Cafe Yokohama]

Kanagawa/Yokohama City



The Experience

Enjoy a local gourmet experience at Hard Rock Cafe Yokohama, a landmark in Yokohama's Minato Mirai district. Savor an exclusive burger inspired by Yokohama's famous gyunabe (beef hot pot), served with a mini salad and dessert. In the extraordinary atmosphere filled with stage costumes and instruments from world-famous artists, guests can fully enjoy the fusion of music and cuisine—whether for lunch or dinner.

Sales Points

- Excellent location: just a 5-minute walk from PACIFICO Yokohama and within walking distance of major hotels.
- Vegetarian and other dietary restrictions, as well as allergies, can be accommodated. English menus are available.
- Special perks for inbound guests include a commemorative sticker, mini flag, and a 15% OFF voucher for the ROCK SHOP—creating a memorable Yokohama experience.

General Information

- Contact: Kanagawa DMO
- Business Hours: 9:00 AM - 5:00 PM
- Website: <https://www.kanagawa-kankou.or.jp/>
- Phone: 045-681-0007
- Email: product@kanagawa-kankou.or.jp

Tour Types

Individual Travel, Group Travel

Target

Relaxation-oriented, Active

Price

Please inquire

Includes

- Hard Rock Cafe Yokohama Set (Sukiyaki Local Burger/Mini Salad/Mini Dessert/Sticker/15% OFF Voucher for ROCK SHOP)
- *Additional food and beverage charges are to be paid on-site.

Meeting Point

Hard Rock Cafe Yokohama, 1st Floor, Queen's Tower A, 2-3-1 Minatomirai, Nishi-ku, Yokohama City

Reservation Period

From 3 months in advance up to the day of visit (subject to availability)

Period and frequency of implementation

Year-round (excluding days reserved for private group events)

Time required/Start Time

Lunch: Approximately 1 hour (from 11:00 AM to 4:00 PM)
Dinner: Approximately 2 hours (from 4:00 PM to 10:00 PM)
※Start time can be arranged upon request.

Group Size

From 1 to 120 pax (seated)
(Maximum capacity: 120 seated/up to 160 standing)

Languages

☐ EN ☐ ZH ☐ KO ☐ Others

Guide provided?

No

**29 - A Discover Joraku-ji Temple, Yokosuka's Historic Temple
Admire the Masterpieces of Unkei**

Kanagawa/Yokosuka City



The Experience

Located about 40 minutes from Yokohama, Jorakuji Temple in Yokosuka's scenic Sasajima area has over 800 years of history and houses five Buddha statues by the renowned Kamakura-period sculptor Unkei.

At the Darkness Pilgrimage, visitors worship the statues by candlelight while listening to sutras, enjoying a serene and immersive experience.

Guests can also take part in cultural activities such as Shakyo (sutra copying) or painting small Buddha statues, offering a hands-on encounter with Japan's rich spiritual and artistic heritage.

Sales Points

Visitors can enjoy cultural experiences such as Shakyo (sutra copying) on traditional Japanese paper or Painting small Buddha statues carved by contemporary sculptors. Guests can also savor meals made with carefully selected, high-quality ingredients, creating a rich and immersive cultural experience.

General Information

- Contact: Kanagawa DMO
- Business Hours: 9:00 AM - 5:00 PM
- Website : <https://www.kanagawa-kankou.or.jp/>
- Phone : 045-681-0007
- Email : product@kanagawa-kankou.or.jp

Tour Types

Group Travel

Target

Relaxation-oriented, Active

Price

Please inquire

Includes

Darkness Pilgrimage (viewing of Buddhist statues) and Temple Tour in Japanese

Meeting Point

In front of the Treasure Hall, Jorakuji Temple

Reservation Period

Up to one month in advance

Period and frequency of implementation

Year-round (excluding days reserved for private group events)

Time required/Start Time

Darkness Pilgrimage: 1 hour
(Starting time negotiable)

【Optional Experiences】
Sutra Copying Experience/Painting Experience : 1.5 hours each

Group Size

Darkness Pilgrimage: Up to 30 pax
Recommended: up to 20 pax

【Optional Experiences】
Sutra Copying Experience: 5—30 pax
Painting Experience : 5—15 pax

Languages

☐EN ☐ZH ☐KR ■Others: Multilingual
Tablet Guide (EG, ZH, FR)

Guide provided?

Japanese only

29 - B Discover Mansho-ji Temple, Yokosuka's Historic Temple
Zen Meditation and Traditional Tea Ceremony Experiences

Kanagawa/Yokosuka City



The Experience

During the Kamakura period, Yokosuka was near Japan's political center, and many historical sites reflect its samurai heritage. Mansho-ji Temple, founded by Minamoto no Yoritomo to honor the loyal warrior Miura Yoshiaki, is a Rinzai Zen temple with over 820 years of history. Visitors can enjoy its beautiful kare-sansui (dry landscape) garden and authentic tea room, experiencing tea ceremony and Zen meditation to calm the mind and find inner peace.

Sales Points

In addition to Zen meditation and the tea ceremony, visitors can view the statue of Miura Yoshiaki, a National Important Cultural Property, and offer prayers for health and longevity. The temple also serves traditional kaiseki cuisine, a refined multi-course meal highlighting seasonal flavors. Together, these experiences allow visitors to create a personalized journey into Japan's spiritual and cultural heritage.

General Information

- Contact: Kanagawa DMO
- Business Hours: 9:00 AM - 5:00 PM
- Website : <https://www.kanagawa-kankou.or.jp/>
- Phone : 045-681-0007
- Email : product@kanagawa-kankou.or.jp

Tour Types

Group Travel

Target

Relaxation-oriented, Active

Price (Tax Included)

Please inquire

Includes

Admission to the Main Hall, Zen Meditation & Tea Ceremony Experience
Guided Tour (in Japanese)

Meeting Point

In Front of the Main Hall, Mansho-ji Temple

Reservation Period

Up to one month in advance

Period and frequency of implementation

Year-round (excluding days reserved for private group events)

Time required/Start Time

Main Hall Visit: 15 min
Zen Meditation Experience: approx. 30 min
Tea Ceremony Experience: approx. 1 hour (may vary depending on group size)

Group Size

- Zen Meditation Experience: 5-15 pax
- Tea Ceremony / Cultural Property Visit: 5-20 pax

Languages

☐ EN ☐ ZH ☐ KR ☐ Others: Multilingual
Tablet Guide (EG, ZH, FR)

Guide provided?

Japanese only

30-A Food sample making experience (On-site workshop)

Kanagawa / All Areas



The Experience

On-site Food sample making experience with a professional instructor.

You will use pre-prepared parts to paint and arrange your own creations. Participants will make two sushi keychains and one tempura keychain.

It's an enjoyable activity for both children and adults, and you can take your finished pieces home as a unique souvenir.

With clear guidance from the instructor, you can join with confidence and have fun throughout the experience.

Sales Points

- A fun program to experience Japan's unique food sample culture.
- Easy to make, enjoyable for everyone.
- As an on-site program, the workshop can be conducted at hotels or event venues.
- The colorful designs are eye-catching and perfect for sharing on social media.
- Bring home your handmade keychains as a lasting memory of Japan.

General Information

- Contact: Kanagawa DMO
- Business Hours: 9:00 AM - 5:00 PM
- Website : <https://www.kanagawa-kankou.or.jp/>
- Phone : 045-681-0007
- Email : product@kanagawa-kankou.or.jp

Tour Types

Group and Incentive Travel

Target

Relaxing out-of-the-ordinary experience or active-interaction with the local

Price (Tax Included)

Please inquire.

Includes

Materials, instructor travel fee, and guide fee

Meeting Point (Address)

Varies depending on venue (arranged for each group)

Access

Varies depending on venue

Reservation Period

From 6 months to 1 month prior

Reservation Accepted

Year-round

Duration

Approx. 30-40 minutes

Group Size

16-80 per group (Contact us for larger groups)

Private

Private bookings only

Languages

☒EN ☒Others : Upon request

Guide Provided?

Yes

Please be aware that there is a slight smell of thinner during this process. Please choose two sushi toppings (from tuna, avocado salmon, shrimp, egg, negitoro, or salmon roe), and select either a sushi plate with ukiyo-e design or a konpeitō (traditional sugar candy) strap.

③0-B Food sample making experience (Atelier workshop)

Kanagawa / All Areas



The Experience

Food sample making experience with a professional instructor. You will use pre-prepared parts to paint and arrange your own creations. Participants will make two sushi keychains and one tempura keychain.

It's an enjoyable activity for both children and adults, and you can take your finished pieces home as a unique souvenir. With clear guidance from the instructor, you can join with confidence and have fun throughout the experience.

Sales Points

- A fun program to experience Japan's unique food sample culture.
- Easy to make, enjoyable for everyone.
- Experience the welcoming atmosphere of the atelier, where you can also explore and purchase other works.
- The colorful designs are eye-catching and perfect for sharing on social media.
- Bring home your handmade keychains as a lasting memory of Japan.

General Information

- Contact: Kanagawa DMO
- Business Hours: 9:00 AM - 5:00 PM
- Website : <https://www.kanagawa-kankou.or.jp/>
- Phone : 045-681-0007
- Email : product@kanagawa-kankou.or.jp

Tour Types	Individual, Group and Incentive Travel
Target	Relaxing out-of-the-ordinary experience or active-interaction with the local
Price (Tax Included)	Please inquire.
Includes	Materials, instruction fee and guide fee
Meeting Point (Address)	302 Heights Yokohama, 7-2 Daimachi, Kanagawa-ku, Yokohama-shi, Kanagawa
Access	10-minute walk from Yokohama Station
Reservation Period	From 6 months to 10 days prior
Reservation Accepted	Year-round
Duration	Approx. 30-40 minutes
Group Size	2-15 person per group
Private	Private bookings only
Languages	<input checked="" type="checkbox"/> EN <input checked="" type="checkbox"/> Others : Upon request
Guide Provided?	Yes

Please be aware that there is a slight smell of thinner during this process. Please choose two sushi toppings (from tuna, avocado salmon, shrimp, egg, negitoro, or salmon roe), and select either a sushi plate with ukiyo-e design or a konpeitō (traditional sugar candy) strap.

③1- (A) Umeshu (Japanese plum wine) making & Ume syrup making at a specialty shop Kanagawa/Kamakura



The Experience

Bringing Japanese ume culture to the world.
Experience making your own umeshu and ume syrup at CHOYA UME STUDIO run by CHOYA, the world's top plum wine brand. Discover your preferences through tasting 5 varieties of umes and 5 types of sugar, then choose your preferred base liquor for umeshu or opt to make ume syrup. You can take your finished creation home as a souvenir in flight-safe packaging. This is a Japanese unique food culture experience enjoyable even for non-drinkers and guests under 20.
English guide available (Menus are also provided in Chinese and Japanese).

Sales Points

The Ume Experience at CHOYA Kamakura store is a special program for overseas guests to "Dive deep into Japanese culture".
By learning about Japan's over 1000-year-old ume tradition while crafting your own umeshu or ume syrup, you can enjoy the "Flavor you nurtured" long after your trip.
Discover the subtle differences in flavor through tasting of ume varieties and sugar types, and experience the delicacy of Japanese food culture.
The experience in the charming city of Kamakura adds even more value to the workshop.

General Information

- Contact: Kanagawa DMO
- Business Hours: 9:00 AM - 5:00 PM
- Website : <https://www.kanagawa-kankou.or.jp/>
- Phone : 045-681-0007
- Email : product@kanagawa-kankou.or.jp

Tour Types

Group and Incentive Travel

Target

Relaxing out-of-the-ordinary experience or active-interaction with the local

Price (Tax Included)

Please inquire.

Includes

Workshop fee, Materials, English guidance, Flight-safe packaging, Takeout drinks, Same-day product storage

Meeting Point

CHOYA UME STUDIO, Kamakura Store
Address : 11-7 Onari-cho, Kamakura city

Access

1-minute walk from Kamakura station

Reservation Period

From 3 months to 1 month prior

Reservation Accepted

Year-round (Closed on weekends, public holidays, and Dec 30 - Jan 3)

Duration

Approx. 50-55 minutes

Group Size

2-14 per group (Contact us for larger groups)

Private

Private bookings for groups of 8 or more

Languages

☒ EN ☐ Others : Upon request

Guide Provided?

Yes (English)

③1— (B) Ume (Japanese plum) syrup making:

Experience the seasons at a traditional Japanese residence

Kanagawa / Kamakura



The Experience

On-site original ume syrup making experience program presented by CHOYA, the world's top plum wine brand. The venue is a traditional Japanese residence "Amakasu Yashiki" in Kamakura, surrounded by vibrant Japanese garden. You can make your own ume syrup combining 5 varieties of umes and 5 types of sugar. You can take your finished creation home as a souvenir in flight-safe packaging. This is a Japanese unique food culture experience enjoyable even for non-drinkers and guests under 20. Vietnamese and English guide available (Menus are also provided in Japanese, English, Chinese and Vietnamese).

Sales Points

[Exclusive] Discover "Authentic Japan" in a heritage home

This special Kamakura plan offers an elegant experience at the traditional Japanese residence "Amakasu Yashiki", where you can enjoy the garden views that reflect the changing seasons.

[Peace of Mind Support] Full Vietnamese support

Enjoy a worry-free experience without language barriers: Vietnamese interpreters can accompany you and Vietnamese menus are available.

[Convenience] Travel light and enjoy sightseeing

Its easily accessible location allows you to smoothly explore Kamakura before or after your experience.

[Group Bookings] Capacity for up to 25 guests

We can accommodate groups of up to 25 guests simultaneously, making it ideal for incentive ours and team building.

General Information

- Contact : TAGGER TRAVEL
- Attn: Anai, Truc
- Business Hours : 11:30-19:30 (Vietnam Time 9:30-17:30)
- Phone : (84)28-3848-1390
- Email : newproject@wakuwaku-vn.com

Tour Types

Individual, Group and Incentive Travel

Target

For corporate (incentive travel, team building), For individuals (luxury travelers, family groups)

Price (Tax Included)

Please inquire.

Includes

Travel fee, Venue fee, Vietnamese interpreter fee, CHOYA Ume kit L size + a special silicone cap (flight-safe packaging) + Takeout drinks

Meeting Point

"Amakasu Yashiki"
2078-1 Ofuna, Kamakura city, Kanagawa

Access

20-minute walk or 5-minute taxi ride from the east exit of JR Ofuna station

Reservation Period

From 3 months to 1 month prior

Reservation Accepted

Weekdays (Excluding Dec 30-Jan 3)
Please provide your preferred date in advance. *Dates are subject to change based on the calendar; Contact us for each inquiry.

Duration

Approx. 50-55 minutes (10:00-18:00)

Group Size

1-25 guests

Private

Private booking

Languages

☒ EN ☒ Vietnamese

Guide Provided?

Yes (Vietnamese - English)